

# Quick and Easy to Use All-in-One Color MFP

Providing optimized solution  
for your everyday business needs

High-Performance,  
Cost-effective MFP with  
Outstanding Design!

Sindoh's D201 and D202 are  
Easy-to-use Multifunction Devices  
that boost your business  
productivity.

**Compact  
Business  
Solution**



## Specifications

Copy			
Model		D201	D202
Resolution	Scan	600dpi x 300 dpi (Standard) / 600dpi x 600 dpi (Maximum)	
	Print	600dpi x 600dpi	
Memory		2GB	
Micro SD Memory		16GB (optional)	
Max. Paper Size		A3 or 11" x 17"	
Continuous Copy		999 sheets	
Time to Preheat		38 sec. or less (at ambient temperature 23°C)	
Time to first page	Color	10.2 sec. or less	
	B&W	7.8 sec. or less	
Copy per Minute	Color	22 sheets	28 sheets
	B&W	22 sheets	28 sheets
ADF Capacity		70 sheets	
Paper Feeding Capacity	1st Tray	500 sheets (B4, A4S, A4, B5S, B5, A5S or Invoices, Legal, Letter, Letters, FLS, 16K)	
	2nd Tray	500 sheets (A3, B4, A4S, A4, B5S, B5, A5S or Invoices, Ledger, Legal, Letter, Letters, FLS, 8K, 16K)	
	Manual Paper Feeder	150 sheets (SRA3, A3wide, A6 to A3 Executive to Ledger, 16K to 8K, FLS)	
Paper Weight	Single Side	60-256 g/m2 (1st and 2nd Tray) / 60-300 g/m2 (manual paper feeder)	
	Double Side	60-256 g/m2	
Max. Power Consumption		1,580 W or less (220-240 V)	
Size (W X D X H)		559 x 633.5 x 777.6 mm	
Weight		71 Kg	

Print (Default)			
Model		D201	D202
Type		Internal	
Output Resolution		600 dpi x 600 dpi	
Print Speed	Color	22 sheets	28 sheets
	B&W	22 sheets	28 sheets
Print Language		PCL5e/c Emulation, PCL XL ver.3.0 Emulation, PostScript 3 Emulation (3016), XPS Ver.1.0, PDF1.7, PPMU/GA2.2, PPMU VDX	
FONT	PCL	80 fonts	
	PS	Type1 font: 137 fonts	
Interface		Ethernet (1000Base-T/100Base-TX/10Base-T), USB 2.0/1.1	

Scan (Default)			
Model		D201	D202
Type		Full color scanner	
Interface		Ethernet (1000Base-T/100Base-TX/10Base-T)	
Driver		TWAIN Driver	
Protocol		TCP/IP (FTP, SMB, SMTP, WebDAV), IP4/IP6	
Scan Speed	Color	22 PPM (using ADF / A4 300dpi basis)	
	B&W	28 PPM (using ADF / A4 300dpi basis)	
Scan Size		Up to A3 or 11" x 17"	
Scan Format		TIFF, PDF, JPEG, XPS	
Scan Resolution	Push	200 dpi/300 dpi/400 dpi*/600 dpi* * MicroSD optional	
	Pull	200 dpi/300 dpi/400 dpi*/600 dpi* * MicroSD optional	

\* Fax is an option.

Visit : [www.sindoh.com](http://www.sindoh.com) | Contact : [overseas\\_contact@sindoh.com](mailto:overseas_contact@sindoh.com) |

■ Inquiry



A Brand New MFP  
for Better Efficiency  
and Productivity

**A3 MFP  
D201/D202**

Compact Business Solution



## Convenience

### Advanced Features

With its **Advanced Functions**, it provides a more convenient business environment and boosts business productivity.

## High function

### High-end Capability with Advanced Convenience Features

The **High-end Capability** improves any business environment with **Advanced Convenience Features**.

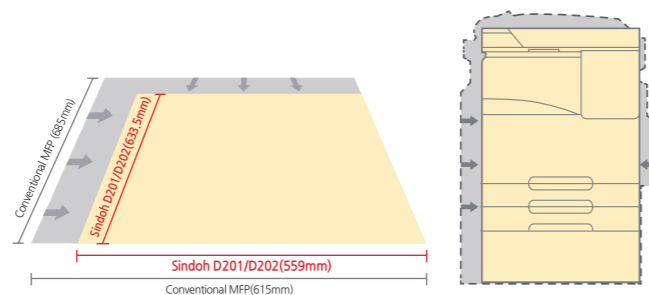
## Innovation

### User Centered Solutions

**User Centered Design** maximizes user satisfaction by providing optimized solutions for better efficiency and advanced security.

### Compact Size

The compact and slim design of 559 x 633.5 x 777.6mm dimensions offers excellent spatial efficiency compared to conventional MFPs.



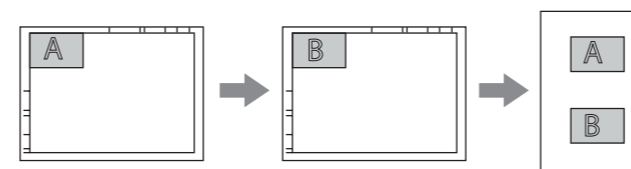
### Support for Various Scan Solutions

A scanned document can be printed, saved as a file, or easily transmitted through various formats such as e-mail or PCs.



### Copying ID Cards

Both sides of an ID card can be easily copied to a sheet of paper. To copy a card, such as an insurance card, ID card, or business card, Place both sides of the card on a page as instructed on the screen to copy the images of both sides on the same piece of paper.



### Color Selection for Copying

You can select a color for copying a document. The product is set up to automatically print a scanned document in color or B&W. When using the red and black color recognition function, the use of toner can be reduced.

- **Automatic Color** : The printer automatically selects color or B&W printing according to the color of the scanned document.
- **All Colors** : The document is copied in color regardless of whether the scanned document is in color or B&W.
- **B&W** : The document is copied in B&W regardless of whether the scanned document is in color or B&W.
- **Red + B&W** : If the scanned document has the red text, it is copied in red. In other cases, the document is copied in B&W.

### Duplex printing

Both sides of document can be copied or printed without installing additional option.

### MS Excel / PowerPoint Data Print

Its design is optimized for printing MS Excel and MS PowerPoint documents, which are commonly used in business environments. It helps you easily print the created documents.

**MS Excel Print** This function prevents separate printing when the MS excel sheets with different print options are printed at once.  
※ This function is enabled only by the Windows printer driver and may not be supported in some environments or application software.

**MS PowerPoint Print** This accurately configures and prints images when printing the overlay image on a white background in PowerPoint. It prevents the overprinting of the overlay image by the white background of PowerPoint.

### USB Memory Printing

Files in a USB memory stick are printed when the USB memory stick is connected to the printer. It supports the PDF, Compact PDF, JPEG, TIFF, OO- XML (.docx/.xlsx/.pptx), and PPML (.ppml/.vdx/.zip) formats. USB memory: FAT32 supported

### Web Connection

The built-in utility software manages the device. Users can simply connect to the device from a PC, check the condition of the device, and configure various settings as needed.

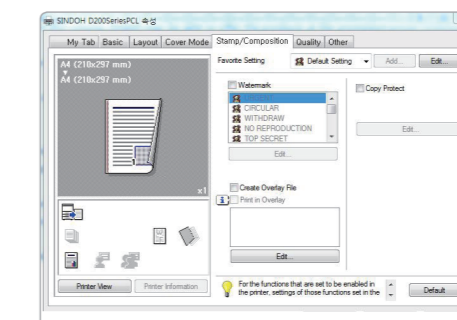
### Partitioned Scan

If there are too many papers to scan that cannot be loaded into ADF all at once, they can be loaded in bundles and still be scanned as a document.

### Advanced Security Features

This function prevents the leakage of information from the output document. When a copy-protected document is copied, the hidden watermark is displayed on all pages to show that the copy was not authorized.

#### • Output Setting to Prevent Copying



Setting	Description
Pattern	Select whether the pattern of the text will be uneven or outlined during the unauthorized copy.
Pattern Overwriting	Select whether the copy protection pattern will be displayed on the front or rear side of the document.
Background Pattern	Select a copy protection pattern from the background patterns saved in the device.
Text/Background Color	Select a color for the copy protection pattern.
Text	Select the text to be printed. Select <Custom> to specify the text.
Font Name	Select the font of the text that is to be printed.
Character Size	Select the size of the text that is to be printed.



Simple and Intuitive Operation



USB Memory Printing available

## USER FRIENDLINESS



Compact Size

Various Scan Solution

Security Solution

My Tab



## Office Color Function